



Human Apolipoprotein CII ELISA Kit

Enzyme Immunoassay for the quantification of human Apolipoprotein CII (ApoCII) in human plasma, serum and biological fluids

Catalog number: ARG81209

distributed in the US/Canada by:

EAGLE BIOSCIENCES, INC.

20A NW Blvd, Suite 112 Nashua, NH 03063

Phone: 617-419-2019 FAX: 617-419-1110

www.EagleBio.com • info@eaglebio.com



EAGLE
BIOSCIENCES

For research use only. Not for use in diagnostic procedures.

TABLE OF CONTENTS

SECTION	Page
PRINCIPLE OF THE ASSAY	3
MATERIALS PROVIDED & STORAGE INFORMATION	4
MATERIALS REQUIRED BUT NOT PROVIDED	5
TECHNICAL HINTS AND PRECAUTIONS	5
SAMPLE COLLECTION & STORAGE INFORMATION	6
REAGENT PREPARATION.....	7
ASSAY PROCEDURE	8
CALCULATION OF RESULTS	10
EXAMPLE OF TYPICAL STANDARD CURVE	10
QUALITY ASSURANCE.....	11

MANUFACTURED BY:

Arigo Biolaboratories Corporation

Address: No. 22, Ln. 227, Gongyuan Rd., Hsinchu City 300, TCIwan

Phone: +886 (3) 562 1738

Fax: +886 (3) 561 3008

EmCII: info@arigobio.com

INTRODUCTION

Apolipoprotein CII (ApoCII) is a member of the apolipoprotein C1 family. ApoCII is expressed primarily in the liver, and it is activated when monocytes differentiate into macrophages. A pseudogene of this gene is located 4 kb downstream in the same orientation, on the same chromosome. This gene is mapped to chromosome 19, where it resides within an apolipoprotein gene cluster. Alternatively spliced transcript variants have been found for this gene, but the biological validity of some variants has not been determined. [provided by RefSeq, Jul 2008]

Apolipoprotein CII (ApoCII) is an inhibitor of lipoprotein binding to the low density lipoprotein (LDL) receptor, LDL receptor-related protein, and very low density lipoprotein (VLDL) receptor. Associates with high density lipoproteins (HDL) and the triacylglycerol-rich lipoproteins in the plasma and makes up about 10% of the protein of the VLDL and 2% of that of HDL. Appears to interfere directly with fatty acid uptake and is also the major plasma inhibitor of cholesteryl ester transfer protein (CETP). Binds free fatty acids and reduces their intracellular esterification. Modulates the interaction of APOE with beta-migrating VLDL and inhibits binding of beta-VLDL to the LDL receptor-related protein. [UniProt]

PRINCIPLE OF THE ASSAY

This assay employs the quantitative sandwich enzyme immunoassay technique. An antibody specific for ApoCII has been pre-coated onto a microtiter plate. Standards or samples are pipetted into the wells and any ApoCII present is

Human Apolipoprotein CII ELISA Kit ARG81209

bound by the immobilized antibody. After washing away any unbound substances, a biotin-conjugated antibody specific for ApoCII is added to each well and incubate. Following a washing to remove unbound substances, streptavidin conjugated to Horseradish Peroxidase (HRP) is added to each microplate well and incubated. After washing away any unbound antibody-enzyme reagent, a substrate solution (TMB) is added to the wells and color develops in proportion to the amount of ApoCII bound in the initial step. The color development is stopped by the addition of acid and the intensity of the color is measured at a wavelength of 450nm \pm 2nm. The concentration of ApoCII in the sample is then determined by comparing the O.D of samples to the standard curve.

MATERIALS PROVIDED & STORAGE INFORMATION

Store the unopened kit at 2-8 °C. Use the kit before expiration date.

Component	Quantity	Storage information
antibody-coated microplate	12 X 8 strips	4°C
Standard (10 µg/ml)	50 µl	-20°C
10X Wash Buffer	100 ml	4°C
Conjugated-ApoCII Antibody concentrate	20 µl	4°C
HRP-Streptavidin concentrate	20 µl	4°C
Assay Diluent	50 ml	4°C
TMB substrate	12ml (Ready-to-use)	4°C (Protect from light)
STOP solution	12ml (Ready-to-use)	4°C

MATERIALS REQUIRED BUT NOT PROVIDED

- Microplate reader capable of measuring absorbance at 450nm (optional: 620 nm as optional reference wave length)
- Pipettes and pipette tips
- Multichannel micropipette reservoir
- Deionized or distilled water
- 1X PBS containing 0.1% BSA.
- Microplate shaker.
- Automated microplate washer (optional)

TECHNICAL HINTS AND PRECAUTIONS

- Wear protective gloves, clothing, eye, and face protection especially while handling blood or body fluid samples.
- Store the kit at 4°C at all times.
- Upon receipt, the Standard should be aliquoted and stored at $\leq -20^{\circ}\text{C}$ to avoid repeated freeze-thaw cycles.
- If crystals are observed in the 10X Wash buffer, warm to RT or 37°C until the crystals are completely dissolved.
- Ensure complete reconstitution and dilution of reagents prior to use.
- All reagents should be mixed by gentle inversion or swirling prior to use. Do not induce foaming.
- Before using the kit, spin tubes and bring down all components to the bottom of tubes.
- It is highly recommended that the standards and samples be assayed in

duplicates.

- Change pipette tips between the addition of different reagent or samples.

SAMPLE COLLECTION & STORAGE INFORMATION

The sample collection and storage conditions listed below are intended as general guidelines. Sample stability has not been evaluated.

Serum- Use a serum separator tube (SST) and allow samples to clot for few minutes before centrifugation for 10 minutes at 1000 x g at 4°C. Collect serum and assay immediately or aliquot and store samples at -80°C up to 3 months. Avoid repeated freeze-thaw cycles.

Plasma - Collect plasma using EDTA or heparin as an anticoagulant at 4°C. Centrifuge for 10 minutes at 1000 x g at 4°C within 30 minutes of collection. Assay immediately or aliquot and store samples at -80°C up to 3 months. Avoid repeated freeze-thaw cycles.

Other Biological Fluids - Centrifuge samples for 10 minutes at 1000 g at 4°C. Assay immediately or aliquot and store samples at -80°C up to 3 months. Avoid repeated freeze-thaw cycles.

REAGENT PREPARATION

- **1X Wash buffer:** Dilute 10X Wash buffer into distilled water to yield 1X Wash buffer, mix well. Storage at 2-8°C.
- **1X Conjugated-ApoCII Antibody working solution:** Dilute the antibody immediately before use; dilute the 1000X Conjugated-ApoCII Antibody concentrate into Assay Diluent to yield 1X Conjugated antibody working solution. (E.g.: 5µl of the Conjugated-ApoCII Antibody concentrate (1000X) + 5ml of Assay Diluent) Do not store diluted solutions.
- **1X HRP-Streptavidin working solution:** Dilute the reagent immediately before use; dilute the 1000X HRP-Streptavidin concentrate into Assay Diluent to yield 1X HRP-Streptavidin working solution. (E.g.: 5µl of the HRP-Streptavidin concentrate (1000X) + 5ml of Assay Diluent) Do not store diluted solutions.
- **Human ApoCII standard:** Prepare a series dilution of Human ApoCII standards with Assay Diluent. The Assay Diluent serves as zero standard (0 pg/ml), and the rest of the standard serial dilution can be diluted with Assay Diluent as according to the suggested concentration table below:

Standard No	Human ApoCII (ng/ml)	Assay Diluent (µl)	Standards (µl)
S1	100	990	10 (10µg/ml stock)
S2	50	500	500 µl (S1)
S3	25	500	500 µl (S2)
S4	12.5	500	500 µl (S3)
S5	6.25	500	500 µl (S4)
S6	3.12	500	500 µl (S5)
S7	1.56	500	500 µl (S6)
S0	0	500	0

Note: Dilutions for the standard must be made and applied to the plate

immediately. S0 serves as background.

- **Sample:** Normal plasma or serum samples should be diluted about 5,000 to 10,000 fold dilution with 0.1% BSA contained 1X PBS immediately before assay. If the assay found samples contain ApoCII still higher than the highest standard, the samples can be further diluted with 0.1% BSA contained 1X PBS and then re-assay the samples. For the calculation of the concentrations this dilution factor has to be taken into account.

(It is recommended to do pre-test to determine the suitable dilution factor).

ASSAY PROCEDURE

Warm Substrate Solution to room temperature (RT) before use. Standards, samples and controls should be assayed in duplicates.

1. Remove excess microtiter strips from the plate frame, return them to the foil pouch containing the desiccant pack, and reseal it. Standards and samples should be assayed in duplicates.
2. Add 100 µl of the Standards and diluted samples into the appropriate wells. Incubate for at least 2 hours at 37°C or incubate overnight at 4°C on a microplate shaker.
3. Aspirate each well and wash, repeating the process 2 times for a total 3 washes. Wash by filling each well with 1× Wash Buffer (250 µl) using a squirt bottle, manifold dispenser, or autowasher. Complete removal of liquid at each is essential to good performance. After the last wash, remove any remaining Wash Buffer by aspirating, decanting or blotting

Human Apolipoprotein CII ELISA Kit ARG81209

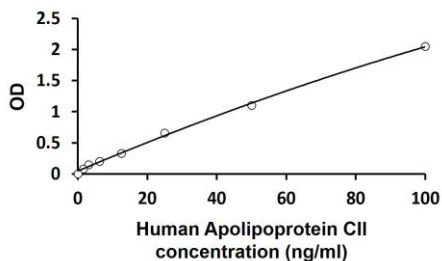
4. Add 100 µl of the 1:1000 diluted Conjugated-ApoCII antibody working solution to each well, incubate for 1 hour at RT on a microplate shaker.
5. Aspirate each well and wash as step 3.
6. Add 100 µl of the diluted HRP-Streptavidin working solution to all wells and incubate for 1 hour at RT on a microplate shaker.
7. Warm TMB substrate solution to RT before next wash step. Aspirate each well and wash as step 3. Proceed immediately to the next step.
8. Add 100 µl of TMB substrate solution into each well. Incubate for 2-30 mins at RT on microplate shaker. Avoid exposure to light.
Note: Watch plate carefully; if color changes rapidly, the reaction may need to be stopped sooner to prevent saturation.
9. Add 100 µl of Stop Solution to each well and shake lightly to ensure homogeneous mixing.
10. Read the OD with a microplate reader at 450nm immediately (optional: read at 620 nm as reference wave length).

CALCULATION OF RESULTS

1. Calculate the average absorbance values for each set of standards, controls and samples.
2. Using linear graph paper, construct a standard curve by plotting the mean absorbance obtained from each standard against its concentration with absorbance value on the vertical (Y) axis and concentration on the horizontal (X) axis.
3. Using the mean absorbance value for each sample determine the corresponding concentration from the standard curve.
4. Automated method: The results in the IFU have been calculated automatically using a 4 PL (4 Parameter Logistics) curve fit. 4 Parameter Logistics is the preferred method. Other data reduction functions may give slightly different results.
5. If the samples have been diluted, the concentration read from the standard curve must be further converted by the appropriate dilution factor according to the sample preparation procedure as described above.

EXAMPLE OF TYPICAL STANDARD CURVE

The following data is for demonstration only and cannot be used in place of data generations at the time of assay.



QUALITY ASSURANCE

Sensitivity

1 ng/ml

Assay Range

0 – 100 ng/ml

distributed in the US/Canada by:

EAGLE BIOSCIENCES, INC.

20A NW Blvd, Suite 112 Nashua, NH 03063

Phone: 617-419-2019 • FAX: 617-419-1110

www.EagleBio.com • info@eaglebio.com



For further information about this kit, its application or the procedures in this kit insert, please contact the Technical Service Team at Eagle Biosciences, Inc. at info@eaglebio.com or at 866-411-8023.

Warranty Information

Eagle Biosciences, Inc. warrants its Product(s) to operate or perform substantially in conformance with its specifications, as set forth in the accompanying package insert. This warranty is expressly limited to the refund of the price of any defective Product or the replacement of any defective Product with new Product. This warranty applies only when the Buyer gives written notice to the Eagle Biosciences within the expiration period of the Product(s) by the Buyer. In addition, Eagle Biosciences has no obligation to replace Product(s) as result of a) Buyer negligence, fault, or misuse, b) improper use, c) improper storage and handling, d) intentional damage, or e) event of force majeure, acts of God, or accident.

Eagle Biosciences makes no warranties, either expressed or implied, except as provided herein, including without limitation thereof, warranties as to marketability, merchantability, fitness for a particular purpose or use, or non-infringement of any intellectual property rights. In no event shall the company be liable for any indirect, incidental, or consequential damages of any nature, or losses or expenses resulting from any defective product or the use of any product. Product(s) may not be resold, modified, or altered for resale without prior written approval from Eagle Biosciences, Inc.

For further information about this kit, its application or the procedures in this kit, please contact the Technical Service Team at Eagle Biosciences, Inc. at info@eaglebio.com or at 866-411-8023.