



Neuropeptide Y ELISA Kit (For Human, Mouse, Rat)

Enzyme Immunoassay for the quantification of Neuropeptide Y in serum,
plasma, tissue and CSF extractions

Catalog number: ARG80934

distributed in the US/Canada by:

EAGLE BIOSCIENCES, INC.

20A NW Blvd, Suite 112 Nashua, NH 03063

Phone: 617-419-2019 FAX: 617-419-1110

www.EagleBio.com • info@eaglebio.com



EAGLE
BIOSCIENCES

For research use only. Not for use in diagnostic procedures.

TABLE OF CONTENTS

SECTION	Page
INTRODUCTION	3
PRINCIPLE OF THE ASSAY	3
MATERIALS PROVIDED & STORAGE INFORMATION	4
MATERIALS REQUIRED BUT NOT PROVIDED	4
TECHNICAL HINTS AND PRECAUTIONS	5
SAMPLE COLLECTION & STORAGE INFORMATION	5
REAGENT PREPARATION	5
ASSAY PROCEDURE	7
CALCULATION OF RESULTS	8
EXAMPLE OF TYPICAL STANDARD CURVE	9
QUALITY ASSURANCE	9

MANUFACTURED BY:

Arigo Biolaboratories Corporation

Address: No. 22, Ln. 227, Gongyuan Rd., Hsinchu City 300, Taiwan

Phone: +886 (3) 562 1738

Fax: +886 (3) 561 3008

Email: info@arigobio.com

INTRODUCTION

Neuropeptide Y is widely expressed in the central nervous system and influences many physiological processes, including cortical excitability, stress response, food intake, circadian rhythms, and cardiovascular function. The neuropeptide functions through G protein-coupled receptors to inhibit adenylyl cyclase, activate mitogen-activated protein kinase (MAPK), regulate intracellular calcium levels, and activate potassium channels. A polymorphism in this gene resulting in a change of leucine 7 to proline in the signal peptide is associated with elevated cholesterol levels, higher alcohol consumption, and may be a risk factor for various metabolic and cardiovascular diseases. The protein also exhibits antimicrobial activity against bacteria and fungi. [Provided by RefSeq, Oct 2014]

PRINCIPLE OF THE ASSAY

This is an Enzyme Immunoassay for the quantification of Neuropeptide Y in serum, plasma, tissue and CSF extractions.

This assay employs the competitive enzyme immunoassay technique. A secondary antibody has been pre-coated onto a microtiter plate and non-specific binding sites were blocked. Fc regions of primary antibodies specific for target peptides can bind to the secondary antibodies on microtiter plate. The Fab regions of primary antibodies are competitively bound by biotinylated peptide and targeted peptides in samples. After washing away any unbound substances, the antibody bound to the solid phase is detected by using TMB as a substrate. The reaction is monitored at $450 \text{ nm} \pm 2 \text{ nm}$. Quantification of unknown samples is achieved by comparing their absorbance with a reference curve prepared with known standards. The intensity of color development is

NPY ELISA Kit ARG80934

inversely proportional to the amount of Neuropeptide Y in the samples.

MATERIALS PROVIDED & STORAGE INFORMATION

Store the unopened kit at 2-8 °C. Use the kit before expiration date.

Component	Quantity	Storage information
Microtiter Plate	12 x 8 wells	4°C
20X assay buffer concentrate	50ml	4°C
Acetate Plate sealer (APS)	3 pieces	4°C
Primary antibody (Rabbit anti-peptide IgG)	1 vial	4°C
Standard peptide	1 vial	4°C
Biotinylated peptide	1 vial	4°C
Streptavidin-HRP	30 µl	4°C
Positive control	2 vials	4°C
Substrate Solution (TMB)	12 ml	4°C, ready for use
2N HCl	15 ml	4°C, ready for use

MATERIALS REQUIRED BUT NOT PROVIDED

- Microplate reader capable of measuring absorbance at 450nm
- Pipettes and pipette tips
- Deionized or distilled water
- Automated microplate washer (optional)

TECHNICAL HINTS AND PRECAUTIONS

- Wear protective gloves, clothing, eye, and face protection especially while handling blood or body fluid samples.
- Store the kit at 4°C at all times.
- Briefly spin down the standards and solutions before use.
- Ensure complete reconstitution and dilution of reagents prior to use.
- It is highly recommended that the standards, samples and controls be assayed in duplicates.
- Change pipette tips between the addition of different reagent or samples.

SAMPLE COLLECTION & STORAGE INFORMATION

The sample collection and storage conditions listed below are intended as general guidelines.

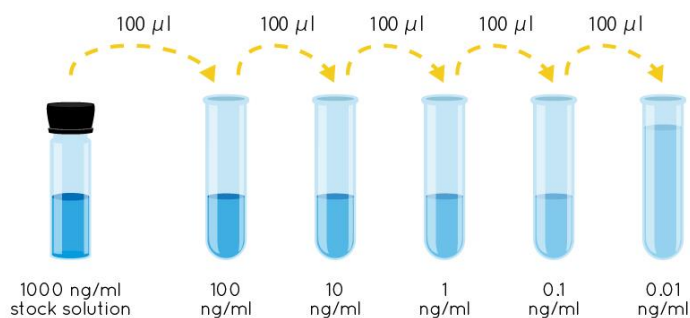
Plasma - Collect blood samples into tubes containing EDTA. Gently rock the tubes several times immediately to prevent coagulation. Transfer the blood from tubes to centrifuge tubes containing aprotinin (0.6 TIU/ml blood) and gently rock for a few times to inhibit activity of proteinases. Plasma kept at -80°C is stable for 1 month.

REAGENT PREPARATION

- **1X Assay Buffer:** Dilute 20X Assay buffer into distilled water to yield 1X Wash buffer. Keep 1X Assay buffer at 4°C. If crystals appear in 20X assay buffer, warm the buffer in warm water bath for 30 minutes or until crystals disappear. Mix well before use.

NPY ELISA Kit ARG80934

- **Primary antibody:** Reconstitute the Primary antibody vial with 5 ml of 1X assay buffer. Allow to sit for 5 minutes and mix well before use. Keep rehydrated solution at 4°C.
- **Biotinylated peptide:** Reconstitute the Biotinylated peptide vial with 5 ml of 1X assay buffer. Allow to sit for 5 minutes and mix well before use. Keep rehydrated solution at 4°C.
- **Positive control:** Reconstitute the Positive control vial with 200 µl of 1X assay buffer. Allow to sit for 5 minutes and mix well before use. Keep rehydrated solution at 4°C.
- **Standard peptide:** Reconstitute the Positive control vial with 1 ml of 1X assay buffer. Vortex. The concentration of this stock solution is 1000 ng/ml. Allow to sit for 10 minutes at RT. Mix well and spin down before use. Dilute standard solutions according to the diagram below and make serial dilutions of 100 ng/ml, 10 ng/ml, 1 ng/ml, 0.1 ng/ml and 0.01 ng/ml.



ASSAY PROCEDURE

1. Add 50 μ l of 1X assay buffer as Total Binding. 2 empty wells should be left as blank.
2. Add 50 μ l of prediluted peptide standards, 50 μ l positive controls and 50 μ l samples into corresponding wells. It is advisable to assay each condition in duplicates.
3. Add 25 μ l of primary antibody into each well except the Blank wells.
4. Add 25 μ l of Biotinylated peptide into each well except the Blank wells. It is not recommended to use a multi-channel pipette to load the primary antibody and biotinylated peptide.
5. Seal the microtiter plate with acetate plate sealer (APS). Incubate for 2 hours at RT. Orbital shaking at 300-400 rpm is recommended.
6. Centrifuge Streptavidin-HRP vial and pipette 12 μ l of Streptavidin-HRP into 12ml of 1X Assay buffer. Vortex thoroughly. Prepare fresh.
7. Remove APS from plate.
8. Aspirate each well and wash, repeating the process 1 times for a total 2 washes. Wash by filling each well with 1 \times Assay Buffer (350 μ l) using a squirt bottle, manifold dispenser, or autowasher. Complete removal of liquid at each is essential to good performance. After the last wash, remove any remaining Wash Buffer by aspirating, decanting or blotting against clean paper towels.
9. Add 100 μ l Streptavidin-HRP solution into each well.
10. Reseal the plate with APS. Incubate for 1 hour at RT. Orbital shaking at 300-400 rpm is recommended.

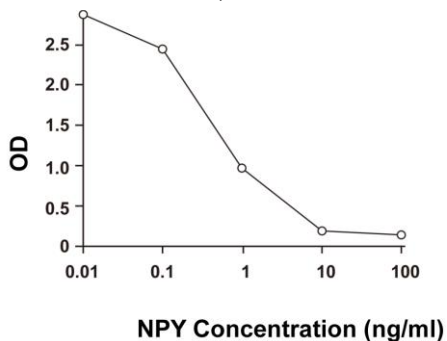
11. Remove APS from plate.
12. Wash as according to step 8.
13. Add 100 µl TMB substrate solution into each well.
14. Reseal the plate with APS. Incubate for 1 hour at RT. Orbital shaking at 300-400 rpm is recommended. (Protect from light)
15. Remove APS from plate.
16. Add 100 µl 2N HCl into all wells to stop the reaction.
17. Read the OD with a microplate reader at 450 nm immediately.

CALCULATION OF RESULTS

1. Calculate the average absorbance values for each set of standards, controls and patient samples.
2. Using linear graph paper, construct a standard curve by plotting the mean absorbance obtained from each standard against its concentration with absorbance value on the vertical (Y) axis and concentration on the horizontal (X) axis.
3. Using the mean absorbance value for each sample determine the corresponding concentration from the standard curve.
4. Automated method: The results in the IFU have been calculated automatically using a 4 PL (4 Parameter Logistics) curve fit. 4 Parameter Logistics is the preferred method. Other data reduction functions may give slightly different results.

EXAMPLE OF TYPICAL STANDARD CURVE

The following data is for demonstration only and cannot be used in place of data generations at the time of assay.



QUALITY ASSURANCE

Sensitivity

The minimum detectable dose (MDD) of NPY ranged from 0-100 ng/ml. The mean MDD was 0.09 ng/ml.

Cross Reactivity

This kit detects no cross-reactivity with the following factor:

Peptide YY (Human, Mouse, Rat, Porcine, Canine)

Pancreatic Polypeptide (Human)

VIP (Human, Rat, Porcine)

Insulin (Human)

Amylin (Human)

Somatostatin (Human, Mouse, Rat, Porcine)

distributed in the US/Canada by:

EAGLE BIOSCIENCES, INC.

20A NW Blvd, Suite 112 Nashua, NH 03063

Phone: 617-419-2019 • FAX: 617-419-1110

www.EagleBio.com • info@eaglebio.com



For further information about this kit, its application or the procedures in this kit insert, please contact the Technical Service Team at Eagle Biosciences, Inc. at info@eaglebio.com or at 866-411-8023.

Warranty Information

Eagle Biosciences, Inc. warrants its Product(s) to operate or perform substantially in conformance with its specifications, as set forth in the accompanying package insert. This warranty is expressly limited to the refund of the price of any defective Product or the replacement of any defective Product with new Product. This warranty applies only when the Buyer gives written notice to the Eagle Biosciences within the expiration period of the Product(s) by the Buyer. In addition, Eagle Biosciences has no obligation to replace Product(s) as result of a) Buyer negligence, fault, or misuse, b) improper use, c) improper storage and handling, d) intentional damage, or e) event of force majeure, acts of God, or accident.

Eagle Biosciences makes no warranties, either expressed or implied, except as provided herein, including without limitation thereof, warranties as to marketability, merchantability, fitness for a particular purpose or use, or non-infringement of any intellectual property rights. In no event shall the company be liable for any indirect, incidental, or consequential damages of any nature, or losses or expenses resulting from any defective product or the use of any product. Product(s) may not be resold, modified, or altered for resale without prior written approval from Eagle Biosciences, Inc.

For further information about this kit, its application or the procedures in this kit, please contact the Technical Service Team at Eagle Biosciences, Inc. at info@eaglebio.com or at 866-411-8023.