



GroPep Bioreagents

IGF-I Polyclonal Antibody (Rabbit)

Description

This IGF-I antibody was prepared by immunising rabbits with an analogue of human IGF-I. The immunoglobulin fraction was prepared by Protein A affinity chromatography. It detects IGF-I in human, mouse, rat and a range of other mammalian species as well as in chicken and fish. The antibody should be used primarily for immunohistochemistry and Western Ligand blotting.

References:

Upton Z *et al* (1996) Journal of Endocrinology **149**, 379-397

Immunogen:

Analogue of human IGF-I

Source:

Rabbit antiserum. The immunoglobulin fraction was purified by Protein A affinity chromatography of serum obtained from a rabbit immunised with a recombinant analogue of human IGF-I

Specificity:

Characterised for IGF-I immunohistochemistry in sections from human, rat, mouse and barramundi (fish) tissues.
Does not detect IGF-II

Appearance:

Lyophilized powder

Storage/Stability:

At least 2 years at 2 - 4°C (lyophilized).
After reconstitution store at -20°C or -80°C
Avoid freeze-thaw cycles

Reconstitution:

Dissolve the vial contents in 1 ml deionised water and then dilute into an appropriate buffer for the application.

Application and Titre:

Each application and titre should be determined in house. We recommend 1:50 for immunohistochemistry. Best results are obtained by using LR³IGF-I as a competitive control. Examples are shown below.

Product Codes and Pricing

IGF-I
Polyclonal Antibody

1 mg **PABCa**

Related Products:

Human IGF-I Polyclonal Antibody
Human IGF-I (Receptor grade)
Chicken IGF-I
Rat IGF-I

****NOT FOR USE IN HUMANS****

GroPep Bioreagents Pty Ltd
51 West Thebarton Road
Thebarton SA 5031
Australia

ABN 93 147 032 166

Telephone: +61 8 7222 1051

Postal Address:
PO Box 10065
Adelaide Business Centre
SA 5000
Australia

Email:
info@gropep.com

Internet:
www.gropep.com

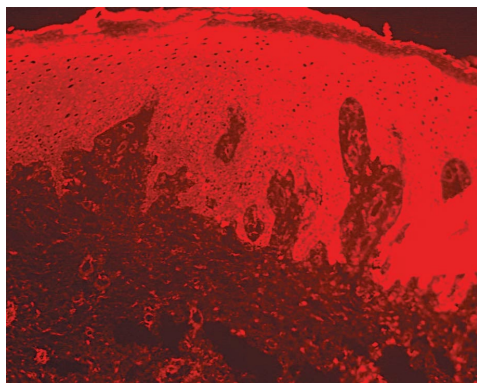


Figure 1 Human Skin

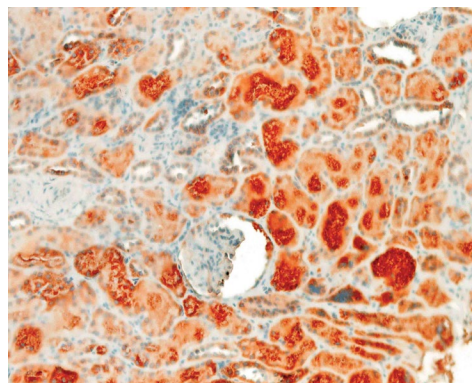


Figure 4 Human Kidney

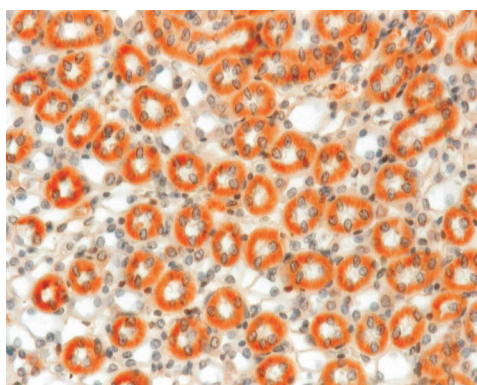


Figure 2 Mouse Kidney

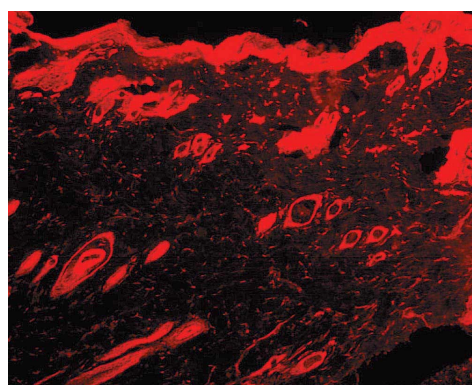


Figure 5 Rat Skin

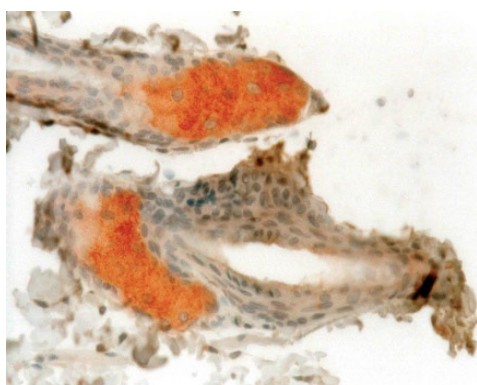


Figure 3 Rat Sebaceous Gland

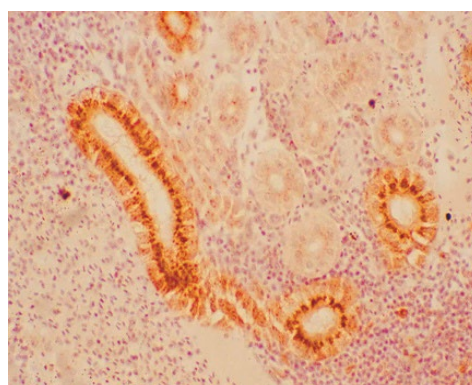


Figure 6 Barramundi (Fish) Kidney

GroPep Bioreagents Pty Ltd
51 West Thebarton Road
Thebarton SA 5031
Australia

ABN 93 147 032 166

Telephone: +61 8 7222 1051

Postal Address:
PO Box 10065
Adelaide Business Centre
SA 5000
Australia

Email:
info@gropep.com

Internet:
www.gropep.com