

IGF-II Polyclonal Antibody (Rabbit)

Description

This IGF-II antibody was prepared by immunising rabbits with a human IGF-II. The antiserum was then affinity purified. It detects IGF-II in human, mouse, rat and chicken. It cross-reacts up to 20% with human IGF-I. The antibody can be used for a number of applications including immunohistochemistry and Western ligand blotting.

References:

Owens PC *et al* (1990) Journal of Endocrinology **124**, 269-275

Immunogen:

Human IGF-II

Source:

Affinity purified rabbit antiserum

Specificity:

Characterised for IGF-II primarily by Western ligand blotting and in sections from human, rat and mouse and tissues.

Cross-reactivity to IGF-I is 20% so appropriate blocking is required

Appearance:

Lyophilized powder

Storage/Stability:

At least 2 years at 2 - 4°C (lyophilized).

After reconstitution store at -20°C or -80°C

Avoid freeze-thaw cycles

Reconstitution:

Dissolve the vial contents in 500µl deionised water and then dilute into an appropriate buffer for the application.

Application and Titre:

Each application and titre should be determined in house but as a guideline, use at 1:100 – 1:1000 for immunohistochemistry or Western ligand blotting. Examples are shown below.

Product Codes and Pricing

IGF-II

Polyclonal Antibody

50 µg

PAAL1

Related Products:

Human IGF-II antiserum

Human IGF-II (Receptor grade)

Chicken IGF-II

Rat IGF-II

****NOT FOR USE IN HUMANS****

GroPep Bioreagents Pty Ltd
51 West Thebarton Road
Thebarton SA 5031
Australia

ABN 93 147 032 166

Telephone: +61 8 7222 1051

Postal Address:
PO Box 10065
Adelaide Business Centre
SA 5000
Australia

Email:
info@gropep.com

Internet:
www.gropep.com

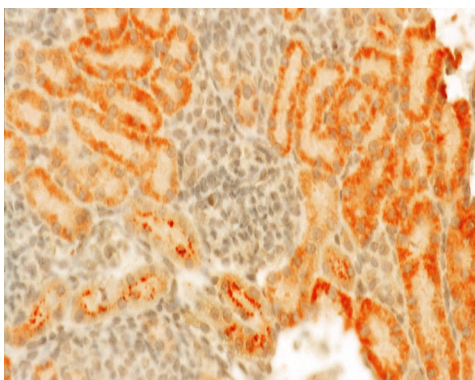


Figure 1 Rat embryo kidney

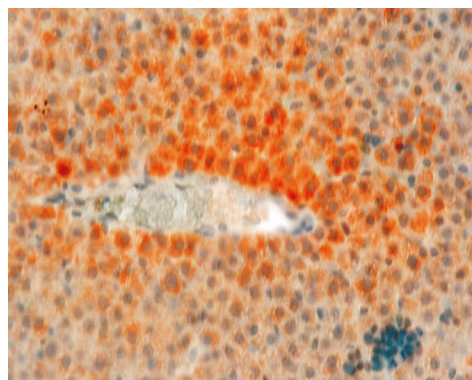


Figure 4 Rat embryo liver

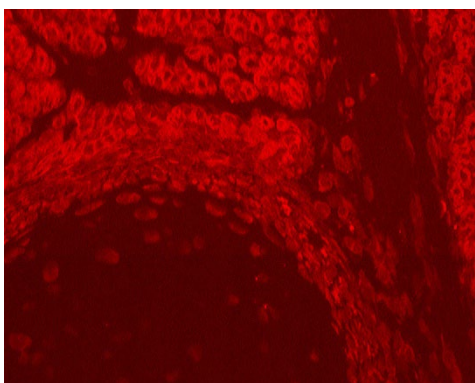


Figure 2 Rat embryo rib

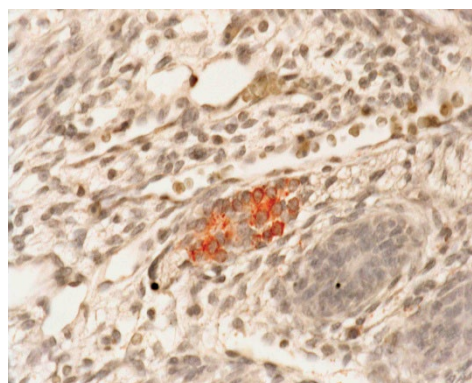


Figure 5 Mouse embryo hair follicle

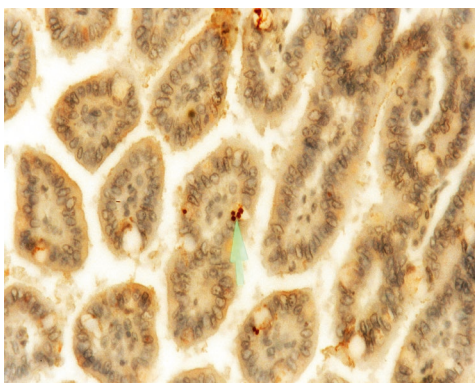


Figure 3 Mouse embryo intestines

GroPep Bioreagents Pty Ltd
51 West Thebarton Road
Thebarton SA 5031
Australia

ABN 93 147 032 166

Telephone: +61 8 7222 1051

Postal Address:
PO Box 10065
Adelaide Business Centre
SA 5000
Australia

Email:
info@gropep.com

Internet:
www.gropep.com