

Blood/Tissue/Cell Genomic DNA Extraction Kit (Magnetic bead method)

Overview

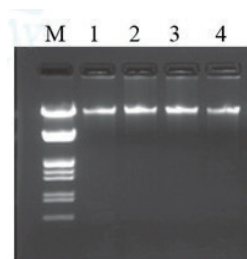
Cat.No. HG-NA100

This kit is designed for the simple and efficient extraction of genome. This kit can be applied to extract a small quantity of samples manually and perform in a high-throughput scale automatically.

Genomic DNA Extracted by this kit can be used to detect host cell DNA in some experiments.

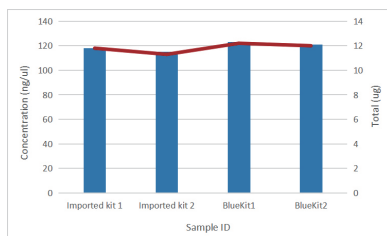
Applications

Shows higher yield and higher purity compared to competing products.



Electrophoresis in 1% agarose gels
 Strip No.1&2: Blood/Tissue/Cell Genomic DNA Extraction Kit (Magnetic bead method)
 Strip No.3&4: Imported Kit
 Results show that genomic fragments extracted using the Bluekit® kit are as complete as those using imported kits.

Extract genomic DNA from two blood samples respectively with the imported kit and the Bluekit® kit, and then detect the concentration with Nanodrop. Results show that the the Bluekit® kit has 5-10% yield more than the imported kit.



	ng/μL	Total(μg)	260/280	260/230
Sample 1	108.72	10.87	1.80	2.13
	112.72	11.27	1.79	2.09
Sample 2	106.56	10.66	1.80	2.10
	106.95	10.70	1.79	2.07