

293T HCP ELISA Detection Kit

Overview

Cat.No. HG-HCP001

This kit is designed for the quantitative detection of HCP (host cell protein) content in biopharmaceuticals expressed on 293T cells by using a double-antibody sandwich method.

This kit can be used to detect all components of HCP (host cell protein) in 293T cell.

Specification

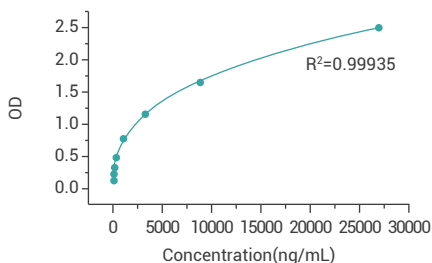
Assay range: 333-27000 ng/mL

Limit of quantitation: 333ng/mL

Limit of detection: 37pg/mL

Precision: CV% \leq 10%, RE% \leq \pm 15%

Standard curve



Datasheet

Concentration of standard (ng/mL)	OD value1	OD value2	Mean value
27000	2.507	2.494	2.5005
9000	1.618	1.625	1.6215
3000	1.176	1.181	1.1785
1000	0.773	0.77	0.7715
333	0.496	0.475	0.4855
111	0.289	0.285	0.287
37	0.205	0.195	0.2
0	0.14	0.137	0.1385