

Stampwell

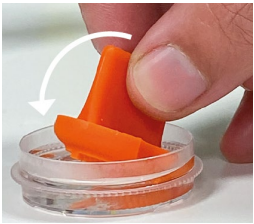
The easy way to mold wells in hydrogel



Stampwell is stamp to imprint micro-wells and mount 3D biological samples for parallelized microscopy experiments.

Key features

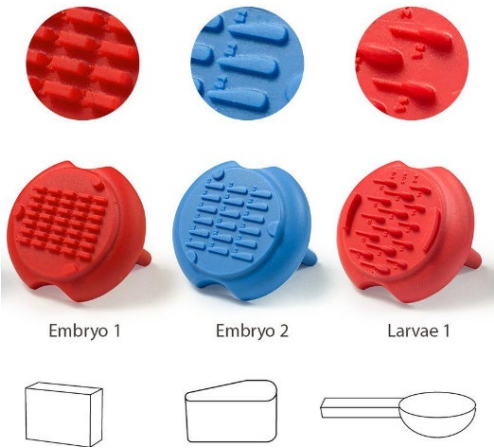
1. Keeps samples on a **similar focal plane**
2. **Immobilizes** samples
3. **User-friendly** and **economic**
 - Easy to handle
 - Usable dozens of times
4. Compatible with a **wide variety of hydrogels**
5. Easy to keep track of samples located with their **alpha-numerical register mark**



Zebrafish Stampwells

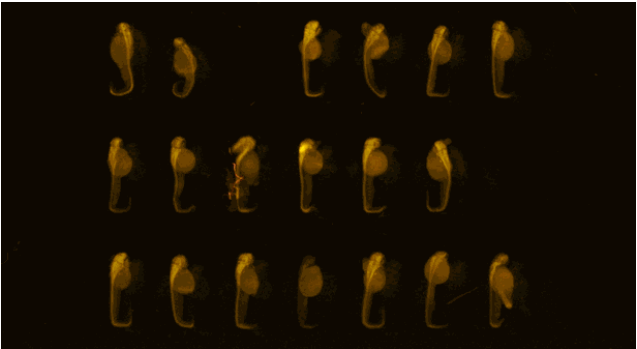
Three different Stamps according to positioning and size of the fish

	Embryo 1	Embryo 2	Larvae 1
Compatible development stages	1-2 dpf	2-3 dpf	3-14 dpf
Position in the wells	ventral	lateral	ventral
Number of wells per stamp	35	18	15



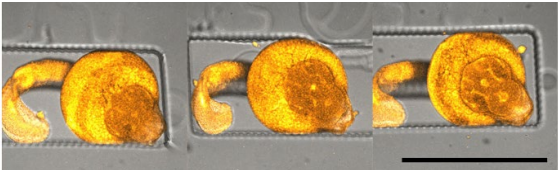
Results

Parallelized imaging of zebrafish embryos using Stampwell Embryo 1



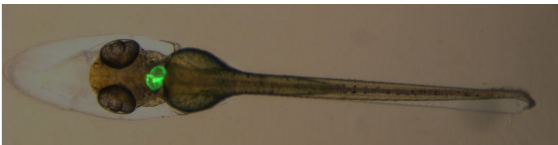
48hpf embryos (anti-HuC/D, ab210554, abcam)
Image Credit : Matthieu Simion, CNRS, 2022

Zebrafish embryos confined in agarose wells



Projection of Z-stack, confocal microscope. (Embryo 1)
Image Credit : Gaëlle Recher, Bordeaux, 2019

Zebrafish larvae, positioned in a Larvae 1 well



3dpf zebrafish larvae, ventral view. Image Credit :
Giovanni Risato and Natascia Tiso, Department of
Biology, University of Padova, Italy

Contact and website