



EAGLE
BIOSCIENCES

High Sensitive Mouse Insulin ELISA Assay Kit

Catalog Number: INH11-K01

For the quantitative determination of insulin
in mouse serum, plasma and fluid

This package insert must be read in its entirety before using this product
Use only the current version of product data sheet enclosed with the kit

1 x 96 Wells

For Research Use Only (RUO). Not for use in clinical, diagnostic or therapeutic procedures.

EAGLE BIOSCIENCES, INC.

20A Northwest Blvd., Suite 112, Nashua, NH 03063

Phone: 617-419-2019 Fax: 617-419-1110

www.EagleBio.com



TABLE OF CONTENTS

Contents	Page
ASSAY PRINCIPLE	1
INTENDED USE	1
REAGENTS SUPPLIED	1
OTHER MATERIALS REQUIRED, BUT NOT PROVIDED	2
STORAGE	2
PREPARATION OF REAGENTS	2
SAMPLE HANDLING	2
ASSAY PROCEDURE	3
CALCULATION	3
TYPICAL STANDARD CURVE	4
ASSAY CHARACTERISTICS	5
SUMMARY OF ASSAY PROCEDURE	6



ASSAY PRINCIPLE

This assay is a two-site ELISA. The micro-plate is pre-coated with a monoclonal antibody against insulin. Standards and samples are added into the wells and co-incubated with a monoclonal antibody conjugated to horseradish peroxidase (HRP) enzyme. After wash step to remove any unbound substances, TMB substrate is added and colour develops in proportion to the amount of insulin bound initially. The assay is stopped and the optical density of the wells determined using a micro-plate reader. Since the increases in absorbance are directly proportional to the amount of captured insulin, the unknown sample concentration can be interpolated from a reference curve included in each assay.

INTENDED USE

The Eagle Biosciences High Sensitive Mouse Insulin ELISA Assay Kit is designed for quantification of mouse insulin in serum, plasma and cell culture supernate samples. The High Sensitive Mouse Insulin ELISA Assay Kit is for research use only and not to be used for diagnostic procedures.

REAGENTS SUPPLIED

Each kit is sufficient for one 96-well plate and contains the following components:

1. Micro-titre Strips (96 wells)-Coated with a monoclonal antibody against insulin, sealed.
2. (10×) Wash buffer-30 ml.
3. Assay buffer-13 ml, ready for use.
4. (100×) Detection antibody solution-A monoclonal antibody against insulin conjugated to horseradish peroxidase (0.12 ml).
5. Insulin standard solutions- 0 ng/ml (5 ml). 0.2 ng/ml, 0.5 ng/ml, 1.0 ng/ml, 2.0 ng/ml, 3.5 ng/ml and 7.0 ng/ml (0.15 ml each), ready for use.
6. Substrate solution- 12 ml, ready for use.
7. Stop solution-12 ml, ready for use.
8. Plate cover-1.



OTHER MATERIALS REQUIRED, BUT NOT PROVIDED

1. Pipettes and pipette tips.
2. 96-well plate or manual strip washer.
3. Buffer and reagent reservoirs.
4. Paper towels or absorbent paper.
5. Plate reader capable of reading absorbency at 450 nm.
6. Distilled water or deionized water.
7. Horizontal micro-plate shaker capable of 600 rpm.

STORAGE

The kit should be stored at 2-8°C upon receipt. Remove any unused antibody-coated strips from the micro-plate, return them to the foil pouch and re-seal. Once opened, the strips may be stored at 2-8°C for up to one month.

PREPARATION OF REAGENTS

Bring all reagents and materials to room temperature before assay.

A. 1×Wash buffer.

Prepare 1×Wash buffer by mixing the 10×Wash buffer (30 ml) with 270 ml of distilled water or deionized water. If precipitates are observed in the 10×Wash buffer bottle, warm the bottle in a 37°C water bath until the precipitates disappear. The 1×Wash buffer may be stored at 2-8°C for up to one month.

B. 1×Detection antibody solution.

Prepare 1×Detection antibody solution by dilution of the 100×Detection antibody solution in Assay buffer, mix well. 100 μ l of the 1×Detection antibody solution is required per well. Prepare only as much 1×Detection antibody solution as needed. Return the 100×Detection antibody solution to 2-8°C immediately after the necessary volume is removed.

SAMPLE HANDLING

No dilution of the sample is required in this assay, if a sample has an insulin level greater than the highest standard, the sample should be diluted with 0 ng/ml insulin standard solution and the assay should be repeated.



ASSAY PROCEDURE

It is recommended that all standards and samples should be run in duplicate.

1. Add 10 μ l of standard or sample to its respective well.
2. Add 100 μ l of 1x Detection antibody solution per well.
3. Seal the plate with a plate cover. Incubate at room temperature for 90 minutes, shaking the plate at 600 rpm on a horizontal micro-plate shaker.
4. Discard the content and tap the plate on a clean paper towel to remove residual solution in each well. Add 300 μ l of 1x Wash buffer to each well. Incubate at room temperature for 20 seconds. Discard the 1x Wash buffer and tap the plate on a clean paper towel to remove residual wash buffer. Repeat the wash step for a total 4 washes.
5. Add 1 μ l of Substrate solution to each well, incubate at room temperature for 15 minutes. Protect from light.
6. Add 1 μ l of Stop solution to each well, gently tap the plate frame for a few seconds to ensure thorough mixing.
7. Measure absorbance of each well at 450 nm immediately

CALCULATION

1. Subtract the absorbance of the blank from that of standards and samples.
2. Generate a standard curve by plotting the absorbance obtained (y-axis) against insulin concentrations (x-axis). The best fit line can be generated with any curve-fitting software by regression analysis. Log-log curve fitting or curve of 4-parameter can be used for calculation.
3. Determine insulin concentration of samples from standard curve.

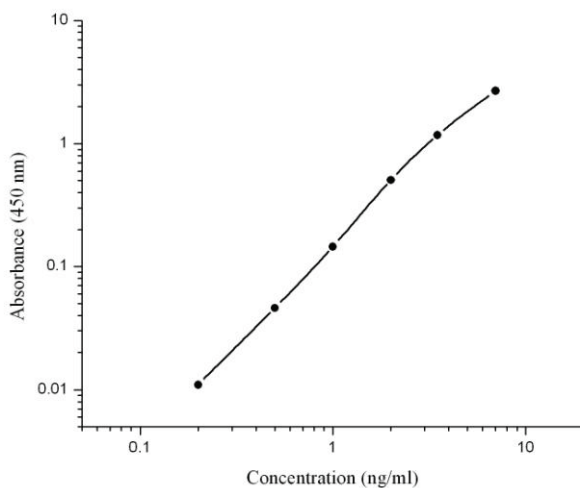


TYPICAL STANDARD CURVE

The following standard curve is provided for demonstration only. A standard curve should be generated for each assay.

Insulin (ng/ml)	Absorbance (450 nm)	Blanked Absorbance
0	0.052	0
0.2	0.063	0.011
0.5	0.098	0.046
1.0	0.197	0.145
2.0	0.558	0.506
3.5	1.23	1.178
7	2.731	2.679

Insulin standard curve (log-log)





ASSAY CHARACTERISTICS

A. Sensitivity

The lowest insulin level that can be measured by this assay is 0.2 ng/ml.

B. Precision

Intra-assay Precision (Precision within an assay) C.V. <10%.

Inter-assay Precision (Precision between assays) C.V. <10%.

. Recovery

The recovery of the assay was determined by adding various amounts insulin to a sample. The measured concentration of the spiked sample in the assay was compared to the expected concentration. The average recovery was 91%.

D. Specificity

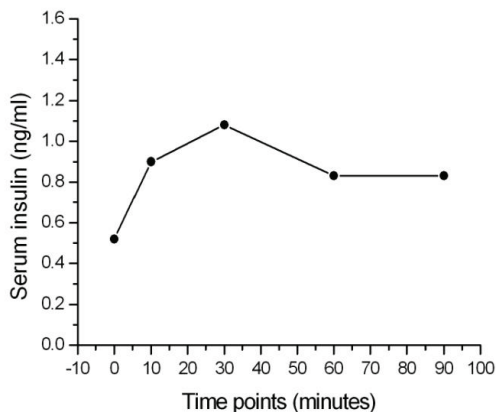
Percent of cross reactivity

Human insulin 100%

Rat insulin 100%

E. Validation

Insulin levels were measured at various time points after intra-peritoneal glucose challenge in overnight fasting C57 mice (high-fat fed).





SUMMARY OF ASSAY PROCEDURE

Add 10 μ l of standard or sample to each well.



Add 100 μ l of 1 \times Detection antibody solution per well.



Incubate at room temperature for 90 minutes (600 rpm).



Wash each well 4 times.



Add 100 μ l of Substrate solution to each well.



Incubate at room temperature for 15 minutes.



Add 100 μ l of Stop solution to each well.



Measure absorbance of each well at 450 nm.



Calculation

Warranty Information

Eagle Biosciences, Inc. warrants its Product(s) to operate or perform substantially in conformance with its specifications, as set forth in the accompanying package insert. This warranty is expressly limited to the refund of the price of any defective Product or the replacement of any defective Product with new Product. This warranty applies only when the Buyer gives written notice to the Eagle Biosciences within the expiration period of the Product(s) by the Buyer. In addition, Eagle Biosciences has no obligation to replace Product(s) as result of a) Buyer negligence, fault, or misuse, b) improper use, c) improper storage and handling, d) intentional damage, or e) event of force majeure, acts of God, or accident.

Eagle Biosciences makes no warranties, either expressed or implied, except as provided herein, including without limitation thereof, warranties as to marketability, merchantability, fitness for a particular purpose or use, or non-infringement of any intellectual property rights. In no event shall the company be liable for any indirect, incidental, or consequential damages of any nature, or losses or expenses resulting from any defective product or the use of any product. Product(s) may not be resold, modified, or altered for resale without prior written approval from Eagle Biosciences, Inc.

For further information about this kit, its application or the procedures in this kit insert, please contact the Technical Service Team at Eagle Biosciences, Inc. at info@eaglebio.com or at 866-411-8023.

distributed in the US/Canada by:

EAGLE BIOSCIENCES, INC.

20A NW Blvd, Suite 112 Nashua, NH 03063

Phone: 617-419-2019 FAX: 617-419-1110

www.EagleBio.com • info@eaglebio.com



EAGLE
BIOSCIENCES