

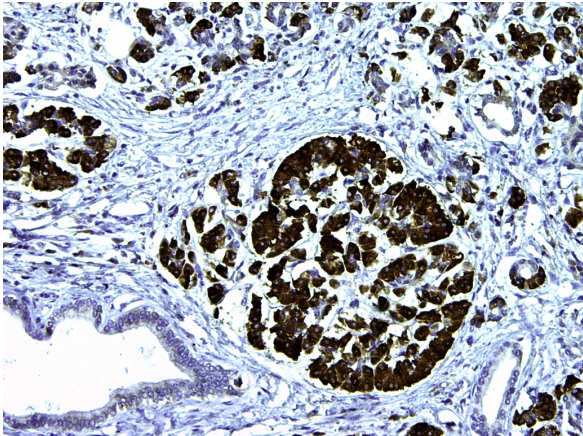
## Mouse monoclonal anti-CHID1 (SI-CLP), clone 3D4

### For Research Use Only

Cat. №	Volume	Configuration	Approx. number of tests
10-310049-7	7 ml	Pre-diluted Antibody, Ready-To-Use	50
10-310049-01	0.1 ml	Concentrated Antibody	75
10-310049-05	0.5 ml		375
10-310049-1	1 ml		750

### Intended Use

**RUO** — Research Use Only.



This product is used to qualitatively detect CHID1 (SI-CLP) in normal and neoplastic formalin fixed paraffin embedded (FFPE) tissue sections in immunohistochemical detection methodology.

### Description

The antibody binds SI-CLP (stabilin-1 interacting chitinase-like protein), also known as CHID1 (Chitinase domain-containing protein 1). It is a 393 amino acid secreted protein that belongs to the glycosyl hydrolase 18 family. SI-CLP is a secretory protein which is up-regulated in response to interleukin-4 and dexamethasone in activated macrophages. SI-CLP is expressed by T- and B-lymphocytes, and by cells of monocytic and epithelial origin. SI-CLP is the ligand for stabilin-1, an intracellular sorting receptor. In activated macrophages it sorts SI-CLP into late endosomes and secretory lysosomes.

### Antigen

Full size recombinant protein

### Reagent provided

This antibody is immunoglobulin IgG1 diluted in 10 mM Phosphate buffered saline (PBS), pH 7.4 containing 1% bovine serum albumin (BSA) and 0.05% ProClin™ 300 as antimicrobial agent.

### Uses/Limitations:

For professional users.

For Research Use Only.

Do not use if reagent becomes cloudy.



**DIAGOMIX**  
DIAGNOSTIC BIOSCIENCE

Do not use past expiration date.

Contains ProClin™ 300 as a preservative (0.05% w/v)

**Usage dilution**

10-310049-7: Ready to Use

10-310049-01; 10-310049-05; 10-310049-1: Dilute 1:50 to 1:100 with Antibody Diluent (REF 12-310001) before use. Optimum dilution factor may vary depending on the specimen and preparation process and should be determined by each individual investigator.

**Epitope retrieval**

Staining of formalin fixed, paraffin embedded tissue sections is significantly enhanced by pretreatment with Tris-EDTA Buffer, pH 9 (REF 12-310008)

**Staining procedure**

Incubate this antibody with tissue section for 30-60 minutes at room temperature. Follow the instructions from the selected detection system.

**Positive control tissue**

Pancreas (macrophages)

**Staining pattern**

Cytoplasm

**Storage**

Store at 2-8°C and in the dark. Do not use after expiration date.

**Warning and precautions**



Refer to SDS.

**Support**

Please contact ClearMe LLC by phone or by e-mail.

info@diagomix.com

**Symbols**

REF	LOT		
Catalog number	Batch number	Temperature Range	Use by



**DIAGOMIX**  
DIAGNOSTIC BIOSCIENCE