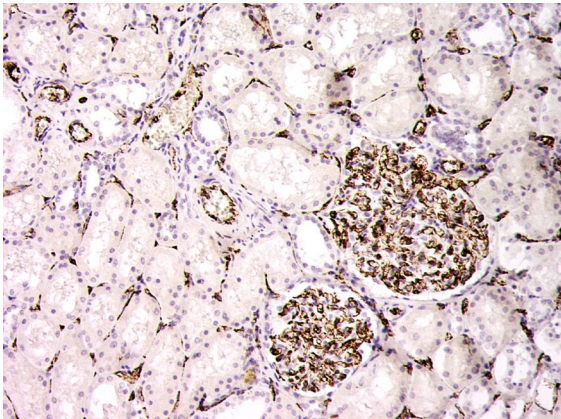


## Mouse monoclonal anti-CD31 antibody, Clone PBM-6B3

### For Research Use Only

Cat. №	Volume	Configuration	Approx. number of tests
10-310040-7	7 ml	Pre-diluted Antibody, Ready-To-Use	50
10-310040-01	0.1 ml	Concentrated Antibody	75
10-310040-05	0.5 ml		375
10-310040-1	1 ml		750

#### Intended Use



**RUO** — Research Use Only.

This product is used to qualitatively detect CD31 (PECAM-1) in normal and neoplastic formalin fixed paraffin embedded (FFPE) tissue sections in immunohistochemical detection methodology.

#### Description

The CD31 protein (platelet / endothelial cell adhesion molecule 1, PECAM-1) is expressed in endothelial cells and in circulating hematopoietic

cells.

Antibodies to CD31 are used to identify vascular tumors (e.g., angiosarcomas), and to detect angiogenesis in some tumors. Positive staining results facilitate the classification of benign and malignant neoplasms of blood vessels. Antibodies to CD31 are included in a panel for identifying epithelioid, spindle cell tumors of the skin and soft tissues.

#### Antigen

Full size recombinant protein

#### Reagent provided

This antibody is immunoglobulin IgG1 diluted in 10 mM Phosphate buffered saline (PBS), pH 7.4 containing 1% bovine serum albumin (BSA) and 0.05% ProClin™ 300 as antimicrobial agent.

#### Uses/Limitations:

For professional users.

For Research Use Only.

Do not use if reagent becomes cloudy.

Do not use past expiration date.



Contains ProClin™ 300 as a preservative (0.05% w/v)

**Usage dilution**

10-310040-7: Ready to Use

10-310040-01; 10-310040-05; 10-310040-1: Dilute 1:50 to 1:100 with Antibody Diluent (REF 12-310001) before use. Optimum dilution factor may vary depending on the specimen and preparation process and should be determined by each individual investigator.

**Epitope retrieval**

Staining of formalin fixed, paraffin embedded tissue sections is significantly enhanced by pretreatment with Citrate Buffer, pH 6 (REF 12-310002) or Tris Buffer, pH 9 (REF 12-310003)

**Staining procedure**

Incubate this antibody with tissue section for 30-60 minutes at room temperature. Follow the instructions from the selected detection system.

**Positive control tissue**

tonsil tissue, kidney

**Staining pattern**

Membrane

**Storage**

Store at 2-8°C. Do not use after expiration date.

**Warning and precautions**



Refer to SDS.

**Troubleshooting**

Please contact ClearMe LLC by phone or by e-mail.

info@diagomix.com

**Symbols**

REF	LOT		
Catalog number	Batch number	Temperature Range	Use by

