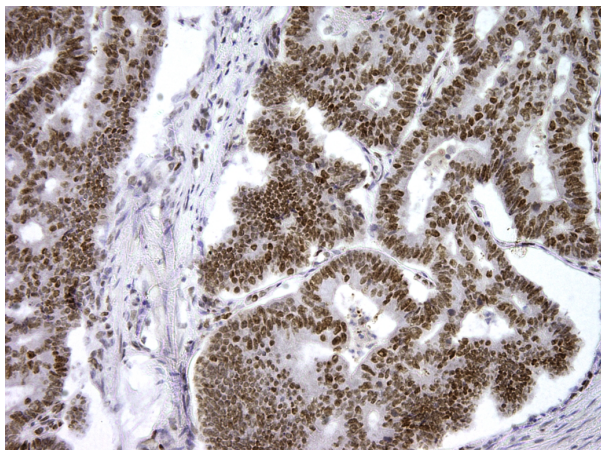


Mouse monoclonal anti-MLH1 antibody, Clone PBM-5A6

For Research Use Only

Cat. №	Volume	Configuration	Approx. number of tests
10-310039-7	7 ml	Pre-diluted Antibody, Ready-To-Use	50
10-310039-01	0.1 ml	Concentrated Antibody	75
10-310039-05	0.5 ml		375
10-310039-1	1 ml		750

Intended Use



RUO — Research Use Only.

This product is used to qualitatively detect MLH1 in normal and neoplastic formalin fixed paraffin embedded (FFPE) tissue sections in immunohistochemical detection methodology.

Description

MLH1 protein is deficient in a high proportion of patients with microsatellite instability (MSI). It has been shown that immunohistochemical analysis of MLH1 expression is a trustworthy and reliable method for the routine detection of most cases of colorectal carcinomas with high MSI frequency, which is often found in hereditary non-polypous colorectal cancer (HNPCC) and in 15% of cases of sporadic colorectal cancer. It is suggested that tumors negative for MLH1 may be associated with greater patient survival without relapse.

Antigen

Full size recombinant protein

Reagent provided

This antibody is immunoglobulin IgG1 diluted in 10 mM Phosphate buffered saline (PBS), pH 7.4 containing 1% bovine serum albumin (BSA) and 0.05% ProClin™ 300 as antimicrobial agent.

Uses/Limitations:

For professional users.

For Research Use Only.

Do not use if reagent becomes cloudy.



Do not use past expiration date.

Contains 0.05% ProClin™ 300 as a preservative (0.09% w/v)

Usage dilution

10-310039-7: Ready to Use

10-310039-01; 10-310039-05; 10-310039-1: Dilute 1:50 to 1:100 with Antibody Diluent (REF 12-310001) before use. Optimum dilution factor may vary depending on the specimen and preparation process and should be determined by each individual investigator.

Epitope retrieval

Staining of formalin fixed, paraffin embedded tissue sections is significantly enhanced by pretreatment with Tris Buffer, pH 9 (REF 12-310003) or Tris-EDTA buffer, pH 9 (REF 12-310008).

Staining procedure

Incubate this antibody with tissue section for 30-60 minutes at room temperature. Follow the instructions from the selected detection system.

Positive control tissue

Colon

Storage

Store at 2-8°C and in the dark. Do not use after expiration date.

Warning and precautions



Refer to SDS.

Support

Please contact ClearMe LLC by phone or by e-mail.

info@diagomix.com

Symbols

REF	LOT		
Catalog number	Batch number	Temperature Range	Use by

