

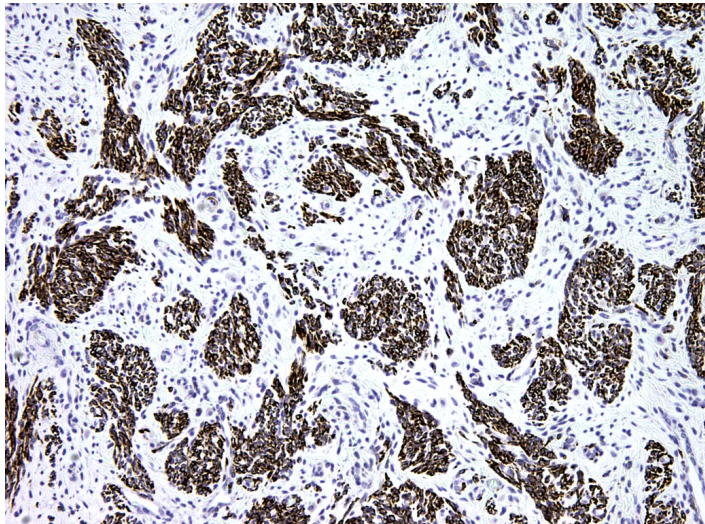


Mouse monoclonal anti-Desmin antibody, clone PBM-3B5

For Research Use Only

Cat. №	Volume	Configuration	Approx. number of tests
10-310038-7	7 ml	Pre-diluted Antibody, Ready-To-Use	50
10-310038-01	0.1 ml	Concentrated Antibody	75
10-310038-05	0.5 ml		375
10-310038-1	1 ml		750

Intended Use



RUO — Research Use Only.

This product is used to qualitatively detect **Desmin** in normal and neoplastic formalin fixed paraffin embedded (FFPE) tissue sections in immunohistochemical detection methodology.

Description

Antibodies binds to desmin, a protein of the intermediate filaments of all three types of muscle cells (skeletal, cardiac

and smooth muscles) and tumors associated with them. Desmin is a specific marker for the myogenic differentiation of soft tissue tumor cells. Desmin is found in most rhabdomyomas, leiomyomas, rhabdomyosarcomas, leiomyosarcomas, as well as in fibroblasts. Desmin is usually absent in myoepithelial cells.

These antibodies label smooth and striated muscle cells, as well as mesothelial cells. Their use allows us to determine the subtypes of many undifferentiated and pleomorphic tumors using the analysis of intermediate filaments. Antibodies to desmin as part of diagnostic panels are used to determine various pleomorphic tumors of soft tissues and skin.

Antigen Full size recombinant protein

Reagent provided

This antibody is immunoglobulin IgG1 diluted in 10 mM Phosphate buffered saline (PBS), pH 7.4 containing 1% bovine serum albumin (BSA) and 0.05% ProClin™ 300 as antimicrobial agent.



**Uses/Limitations:**

For professional users.

For Research Use Only.

Do not use if reagent becomes cloudy.

Do not use past expiration date.

Contains ProClin™ 300 as a preservative (0.05% w/v)

Usage dilution

10-310038-7: Ready to Use

10-310038-01; 10-310038-05; 10-310038-1: Dilute 1:50 to 1:100 with Antibody Diluent (REF 12-310001) before use. Optimum dilution factor may vary depending on the specimen and preparation process and should be determined by each individual investigator.

Epitope retrieval

Not Required. HIER with Citrate buffer, pH 6,0 (REF 12-310002) may enhance staining in some tissues.

Staining procedure

Incubate this antibody with tissue section for 30-60 minutes at room temperature. Follow the instructions from the selected detection system.

Positive control tissue

uterine tissue

Staining pattern

Cytoplasm

Storage

Store at 2-8°C and in the dark. Do not use after expiration date.

Warning and precautions



Refer to SDS.

Support

Please contact ClearMe LLC by phone or by e-mail.

info@diagomix.com

Symbols

REF	LOT		
Catalog number	Batch number	Temperature Range	Use by

