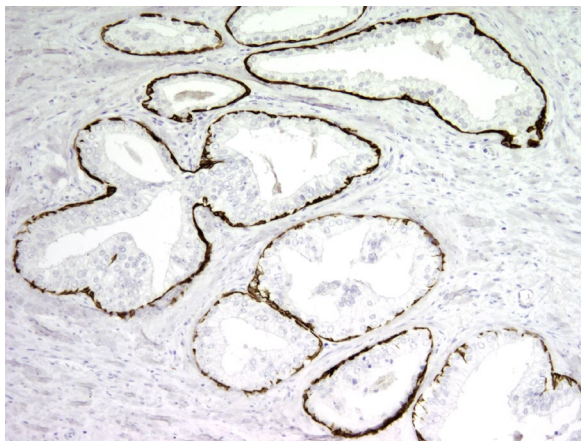


Mouse monoclonal anti-Cytokeratin 5 antibody, clone PBM-2C6

For Research Use Only

Cat. №	Volume	Configuration	Approx. number of tests
10-310037-7	7 ml	Pre-diluted Antibody, Ready-To-Use	50
10-310037-01	0.1 ml	Concentrated Antibody	75
10-310037-05	0.5 ml		375
10-310037-1	1 ml		750

Intended Use



RUO — Research Use Only.

This product is used to qualitatively detect **Cytokeratin 5** in normal and neoplastic formalin fixed paraffin embedded (FFPE) tissue sections in immunohistochemical detection methods.

Description

Antibodies bind to cytokeratin 5 and can be used for the differential diagnosis of low-grade squamous cell carcinoma and adenocarcinoma, epithelial mesothelioma and pleural metastatic carcinoma when used in the panel of antibodies (calretinin, TTF-1). Antibodies to Cytokeratin-5 can also be used for the differential diagnosis of atypical proliferations in the mammary gland.

Antigen

Full size recombinant protein

Reagent provided

This antibody is immunoglobulin IgG1 diluted in 10 mM Phosphate buffered saline (PBS), pH 7.4 containing 1% bovine serum albumin (BSA) and 0.05% ProClin™ 300 as antimicrobial agent.

Uses/Limitations:

For professional users.

For Research Use Only.

Do not use if reagent becomes cloudy.

Do not use past expiration date.

Contains ProClin™ 300 as a preservative (0.05% w/v)

**Usage dilution**

10-310037-7: Ready to Use

10-310037-01; 10-310037-05; 10-310037-1: Dilute 1:50 to 1:100 with Antibody Diluent (REF 12-310001) before use. Optimum dilution factor may vary depending on the specimen and preparation process and should be determined by each individual investigator.

Epitope retrieval

Staining of formalin fixed, paraffin embedded tissue sections is significantly enhanced by pretreatment with Tris Buffer, pH 9 (REF 12-310003).

Staining procedure

Incubate this antibody with tissue section for 30-60 minutes at room temperature. Follow the instructions from the selected detection system.

Positive control tissue

prostate tissue

Staining pattern

Cytoplasm

Storage

Store at 2-8°C and in the dark. Do not use after expiration date.

Warning and precautions



Refer to SDS.

Support

Please contact ClearMe LLC by phone or by e-mail.

info@diagomix.com

Symbols

REF	LOT		
Catalog number	Batch number	Temperature Range	Use by

