

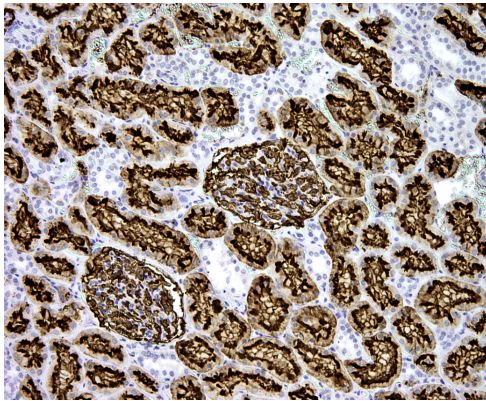
Mouse monoclonal anti-CD10 antibody, Clone PBM-1E2

For Research Use Only

Cat. №	Volume	Configuration	Approx. number of tests
10-310036-7	7 ml	Pre-diluted Antibody, Ready-To-Use	50
10-310036-01	0.1 ml	Concentrated Antibody	75
10-310036-05	0.5 ml		375
10-310036-1	1 ml		750

Intended Use

RUO — Research Use Only.



This product is used to qualitatively detect CD10 (CALLA) in normal and neoplastic formalin fixed paraffin embedded (FFPE) tissue sections in immunohistochemical detection methodology.

Description

Antibodies recognize a CD10 molecule or a common acute lymphoblastic leukemia antigen (CALLA). The use of antibodies allows to characterize subclasses of malignant lymphomas (lymphoma from B-cell

precursors, follicular lymphoma, Burkitt's lymphoma), in which an increase in the level of expression of CD10 is noted. Antibodies to CD10 can be used as part of an antibody panel to detect clear cell or papillary carcinoma of the kidney, in which in most cases the expression of CD10 is significantly increased.

Antigen Full size recombinant protein

Reagent provided

This antibody is immunoglobulin IgG2b diluted in 10 mM Phosphate buffered saline (PBS), pH 7.4 containing 1% bovine serum albumin (BSA) and 0.05% ProClin™ 300 as antimicrobial agent.

Uses/Limitations:

For professional users.

For Research Use Only.

Do not use if reagent becomes cloudy.

Do not use past expiration date.



Contains ProClin™ 300 as a preservative (0.05% w/v)

Usage dilution

10-310036-7: Ready to Use

10-310036-01; 10-310036-05; 10-310036-1: Dilute 1:50 to 1:100 with Antibody Diluent (REF 12-310001) before use. Optimum dilution factor may vary depending on the specimen and preparation process and should be determined by each individual investigator.

Epitope retrieval

Staining of formalin fixed, paraffin embedded tissue sections is significantly enhanced by pretreatment with Tris Buffer, pH 9 (REF 12-310003).

Staining procedure

Incubate this antibody with tissue section for 30-60 minutes at room temperature. Follow the instructions from the selected detection system.

Positive control tissue

kidney, follicular lymphoma, diffuse large B-cell lymphoma

Staining pattern

Membrane

Storage

Store at 2-8°C and in the dark. Do not use after expiration date.

Warning and precautions



Refer to SDS.

Support

Please contact ClearMe LLC by phone or by e-mail.

info@diagomix.com

Symbols

REF	LOT		
Catalog number	Batch number	Temperature Range	Use by

