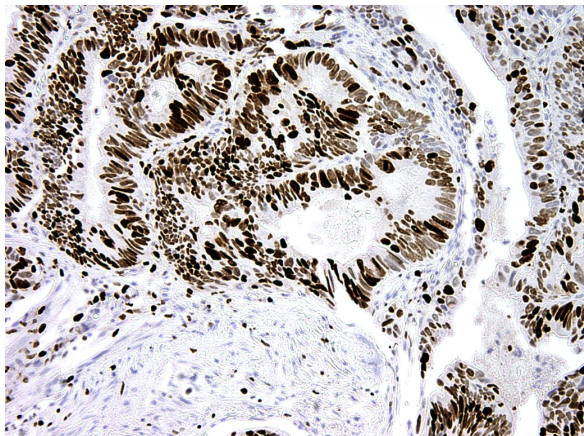




Mouse monoclonal anti-Ki-67 antibody, Clone PBM-20G3

For Research Use Only

Cat. №	Volume	Configuration	Approx. number of tests
10-310028-7	7 ml	Pre-diluted Antibody, Ready-To-Use	50
10-310028-01	0.1 ml	Concentrated Antibody	75
10-310028-05	0.5 ml		375
10-310028-1	1 ml		750



Intended Use

RUO — Research Use Only.

This product is used to qualitatively detect Ki-67 in normal and neoplastic formalin fixed paraffin embedded tissue sections in immunohistochemical detection methodology.

Description

These antibodies bind to the Ki-67 antigen, a nuclear protein associated with proliferation. It is expressed in all active phases of the cell cycle (G1, S, G2 and mitosis), but is absent in resting cells (G0). The Ki-67 protein content in the cell increases significantly during the S phase of the cell cycle. Quantification of cells with a Ki-67 positive nuclear stain is an accurate and reliable way to determine the number of proliferating cells in a tissue sample. With breast cancer, Ki67 can identify a group of patients with ER-positive breast cancer with high proliferative activity, in which adjuvant chemotherapy will be most effective.

Antigen

Full size recombinant protein

Reagent provided

This antibody is purified immunoglobulin IgG2b diluted in 10 mM Phosphate buffered saline (PBS), pH 7.4 containing 1% bovine serum albumin (BSA) and 0.05% ProClin™ 300 as antimicrobial agent.

Uses/Limitations:

For professional users.

For Research Use Only.

Do not use if reagent becomes cloudy.

Do not use past expiration date.

Contains ProClin™ 300 as a preservative (0.05% w/v)



**Usage dilution**

10-310028-7: Ready to Use

10-310028-01; 10-310028-05; 10-310028-1: Dilute 1:50 to 1:100 with Antibody Diluent (REF 12-310001) before use. Optimum dilution factor may vary depending on the specimen and preparation process and should be determined by each individual investigator.

Epitope retrieval

Staining of formalin fixed, paraffin embedded tissue sections is significantly enhanced by pretreatment with Citrate Buffer, pH 6.0 (REF 12-310002)

Staining procedure

Incubate this antibody with tissue section for 30-60 minutes at room temperature. Follow the instructions from the selected detection system.

Positive control tissue

Tonsil tissue

Staining pattern

Nucleus

Storage

Store at 2-8°C and in the dark. Do not use after expiration date.

Warning and precautions



Refer to SDS.

Support

Please contact ClearMe LLC by phone or by e-mail.

info@diagomix.com

Symbols

REF	LOT		
Catalog number	Batch number	Temperature Range	Use by

