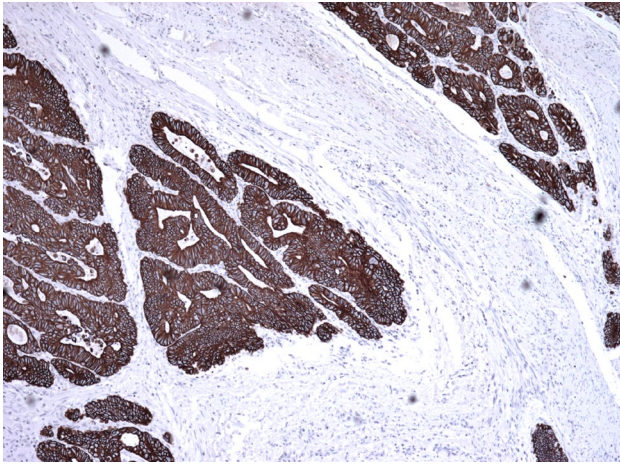


Mouse monoclonal anti-pan Cytokeratin antibody, clone C11

For Research Use Only

Cat. №	Volume	Configuration	Approx. number of tests
10-310015-7	7 ml	Pre-diluted Antibody, Ready-To-Use	50
10-310015-01	0.1 ml	Concentrated Antibody	75
10-310015-05	0.5 ml		375
10-310015-1	1 ml		750

Intended Use



RUO — Research Use Only.

This product is used to qualitatively detect majority cytokeratins (CK) in normal and neoplastic formalin fixed paraffin embedded tissue sections in immunohistochemical detection methodology.

Description

Antibodies binds to cytokeratins (4, 5, 6, 8, 10, 13, and 18) of simple epithelium and tumor derivatives and are expressed in stratified squamous epithelium. Cytokeratins are known

markers of tissue differentiation and are used to determine the malignancy of tumors. Positive staining results contribute to the classification of normal and neoplastic tissues of epithelial origin. C11 antibodies can be used as part of antibody panels for the differential diagnosis of tumors of various etiologies: mammary gland (CK7, CEA), GCDFF-15, TTF-1), lung or liver (CK7, CEA), GCDFF-15, TTF -1); kidney (CEA), TTF-1), seminomes (CAM5.2, CK C11, PLAP, EMA, CD30); as well as for the identification of embryonic germ cells (TTF-1, CK7).

Antigen native cytokeratins: 4, 5, 6, 8, 10, 13 and 18

Reagent provided

This antibody is purified immunoglobulin IgG1 diluted in 10 mM Phosphate buffered saline (PBS), pH 7.4 containing 1% bovine serum albumin (BSA) and 0.05% ProClin™ 300 as antimicrobial agent.

Uses/Limitations:

For professional users.

For Research Use Only.

Do not use if reagent becomes cloudy.

Do not use past expiration date.

Contains ProClin™ 300 as a preservative (0.05% w/v)



Usage dilution

10-310015-7: Ready to Use

10-310015-01; 10-310015-05; 10-310015-1: Dilute 1:50 to 1:100 with antibody Diluent (REF 12-310001) before use. Optimum dilution factor may vary depending on the specimen and preparation process and should be determined by each individual investigator.

Epitope retrieval

Staining of formalin fixed, paraffin embedded tissue sections is significantly enhanced by pretreatment with Tris Buffer pH 9.0 (REF 12-310003)

Staining procedure

Incubate this antibody with tissue section for 30-60 minutes at room temperature. Follow the instructions from the selected detection system.

Positive control tissue

Tissue with epithelial cells (e.g. cervix, GI track, skin, tonsil, uterus, kidney, and placenta).

Staining pattern

Cytoplasm

Storage

Store at 2-8°C and in the dark. Do not use after expiration date.

Warning and precautions



Refer to SDS.

Support

Please contact ClearMe LLC by phone or by e-mail.

info@diagomix.com

Symbols

REF	LOT		
Catalog number	Batch number	Temperature Range	Use by

