

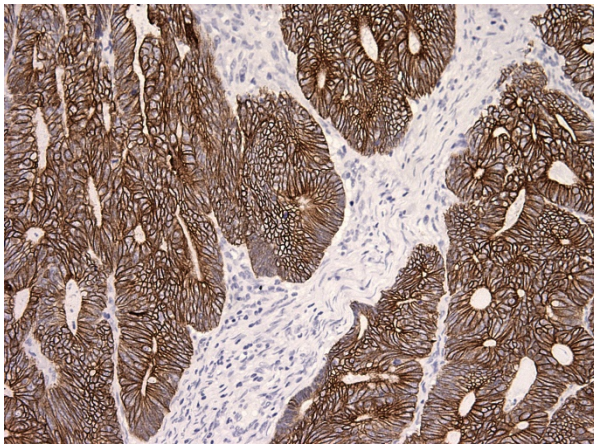
## Mouse monoclonal anti-Cytokeratin 18 antibody, Clone DC-10

### For Research Use Only

Cat. №	Volume	Configuration	Approx. number of tests
10-310011-7	7 ml	Pre-diluted Antibody, Ready-To-Use	50
10-310011-01	0.1 ml	Concentrated Antibody	75
10-310011-05	0.5 ml		375
10-310011-1	1 ml		750

#### Intended Use

**RUO** — Research Use Only.



This product is used to qualitatively detect **Cytokeratin 18** in normal and neoplastic formalin fixed paraffin embedded (FFPE) tissue sections in immunohistochemical detection methodology.

#### Description

Cytokeratin 18 is expressed in simple nonstratified epithelia. The antibody stains endothelial cells of venules, lymphatic vessels and capillaries in some tissues.

#### Antigen

Full size recombinant protein

#### Reagent provided

This antibody is immunoglobulin IgG1 diluted in 10 mM Phosphate buffered saline (PBS), pH 7.4 containing 1% bovine serum albumin (BSA) and 0.05% ProClin™ 300 as antimicrobial agent.

#### Uses/Limitations:

For professional users.

For Research Use Only.

Do not use if reagent becomes cloudy.

Do not use past expiration date.

Contains ProClin™ 300 as a preservative (0.05% w/v)

#### Usage dilution

10-310011-7: Ready to Use



10-310011-01; 10-310011-05; 10-310011-1: Dilute 1:50 to 1:100 with Antibody Diluent (REF 12-310001) before use. Optimum dilution factor may vary depending on the specimen and preparation process and should be determined by each individual investigator.

**Epitope retrieval**

Staining of formalin fixed, paraffin embedded tissue sections is significantly enhanced by pretreatment with Tris Buffer, pH 9 (REF 12-310003).

**Staining procedure**

Incubate this antibody with tissue section for 30-60 minutes at room temperature. Follow the instructions from the selected detection system.

**Positive control tissue**

gastrointestinal tissue

**Staining pattern**

Cytoplasmic

**Storage**

Store at 2-8°C and in the dark. Do not use after expiration date.

**Warning and precautions**



Refer to SDS.

**Support**

Please contact ClearMe LLC by phone or by e-mail.

info@diagomix.com

**Symbols**

REF	LOT		
Catalog number	Batch number	Temperature Range	Use by

