

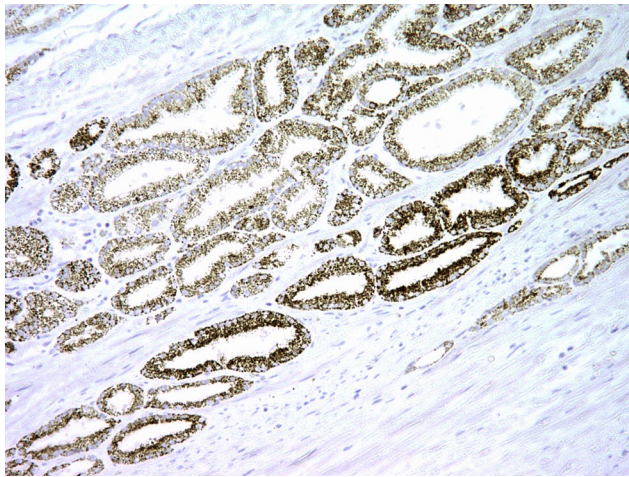


Mouse monoclonal anti-AMACR antibody, Clone PBM-G8

For Research Use Only

| Cat. № | Volume | Configuration | Approx. number of tests |
|--------------|--------|------------------------------------|-------------------------|
| 10-310010-7 | 7 ml | Pre-diluted Antibody, Ready-To-Use | 50 |
| 10-310010-01 | 0.1 ml | Concentrated Antibody | 75 |
| 10-310010-05 | 0.5 ml | | 375 |
| 10-310010-1 | 1 ml | | 750 |

Intended Use



RUO — Research Use Only.

This product is used to qualitatively detect **AMACR** (Alpha Methylacyl Coenzyme A Racemase) in normal and neoplastic formalin fixed paraffin embedded (FFPE) tissue sections in immunohistochemical detection methodology.

Description

AMACR (alpha-methyl acyl-coenzyme A racemase A) is expressed in cells of precancerous intraepithelial neoplasia of the prostate (PIN) with high malignant potential and prostate adenocarcinoma, but is present at low or undetectable levels in normal glandular epithelial cells of the prostate and benign hyperplasia cells. AMACR is the preferred marker for prostate cancer. In addition, AMACR is expressed in normal epithelium and in cells of other adenocarcinoma species.

Antigen peptide

Reagent provided

This antibody is immunoglobulin IgG2a, kappa diluted in 10 mM Phosphate buffered saline (PBS), pH 7.4 containing 1% bovine serum albumin (BSA) and 0.05% ProClin™ 300.

Uses/Limitations:

For professional users.

For Research Use Only.

Do not use if reagent becomes cloudy.

Do not use past expiration date.

Contains ProClin™ 300 as a preservative (0.05% w/v)





Usage dilution

10-310010-7: Ready to Use

10-310010-01; 10-310010-05; 10-310010-1: Dilute 1:50 to 1:100 with Antibody Diluent (REF 12-310001) before use. Optimum dilution factor may vary depending on the specimen and preparation process and should be determined by each individual investigator.

Epitope retrieval

Staining of formalin fixed, paraffin embedded tissue sections is significantly enhanced by pretreatment with Tris buffer, pH 9 (12-310003).

Staining procedure

Incubate this antibody with tissue section for 30-60 minutes at room temperature. Follow the instructions from the selected detection system.

Positive control tissue

Prostate adenocarcinoma

Staining pattern

Cytoplasm

Storage

Store at 2-8°C and in the dark. Do not use after expiration date.

Warning and precautions



Refer to SDS.

Support

Please contact ClearMe LLC by phone or by e-mail.

info@diagomix.com

Symbols

| REF | LOT |  |  |
|----------------|--------------|---|---|
| Catalog number | Batch number | Temperature Range | Use by |

