

Beta Synuclein Protein

Active Human Recombinant Beta Synuclein
Protein Preformed Fibrils (Type 1)
Catalog No. SPR-457



Discovery through partnership | Excellence through quality

Product Name

Beta Synuclein Protein

EAGLE BIOSCIENCES, INC.
20A NW BLVD, SUITE 112 NASHUA, NH 03063
P: 617-419-2019 F: 617-419-1110
WWW.EAGLEBIO.COM — INFO@EAGLEBIO.COM



EAGLE
BIOSCIENCES

Description

Active Human Recombinant Beta Synuclein Protein Preformed Fibrils (Type 1)

Applications

WB, SDS-PAGE, In vivo assay, In vitro assay

Concentration

Lot/batch specific. See included datasheet.

Conjugates

No tag

Nature

Recombinant

Species

Human

Expression System

E. coli

Purity

>95%

Protein Length

Full Length

Field Of Use

Not for use in humans. Not for use in diagnostics or therapeutics. For research use only.

Properties

Storage Buffer

PBS pH 7.4

Storage Temperature

-80°C

Shipping Temperature

Dry Ice. Shipping note: Product will be shipped separately from other products purchased in the same order.

Purification

Ion-exchange Purified

Specificity

14.28 kDa

Cite This Product

Human Recombinant Beta Synuclein Protein (StressMarq Biosciences Inc., Victoria BC CANADA, Catalog #SPR-457)

Certificate Of Analysis

Certified >95% pure using SDS-PAGE analysis.

Biological Description

Alternative Names

14 kDa brain-specific protein aggregates, Beta-synuclein Protein Aggregates, Phosphoneuroprotein 14 Protein Aggregates, PNP14 Protein Aggregates, Sncb Protein Aggregates, Synuclein beta Protein Aggregates, SYUB_HUMAN Protein Aggregates

Research Areas

Alzheimer's Disease, Neurodegeneration, Neuroscience, Parkinson's Disease, Synuclein, Tangles & Tau

Cellular Localization

Cytoplasm

Accession NumberNP_001001502.1

Gene ID6620

Swiss ProtQ16143

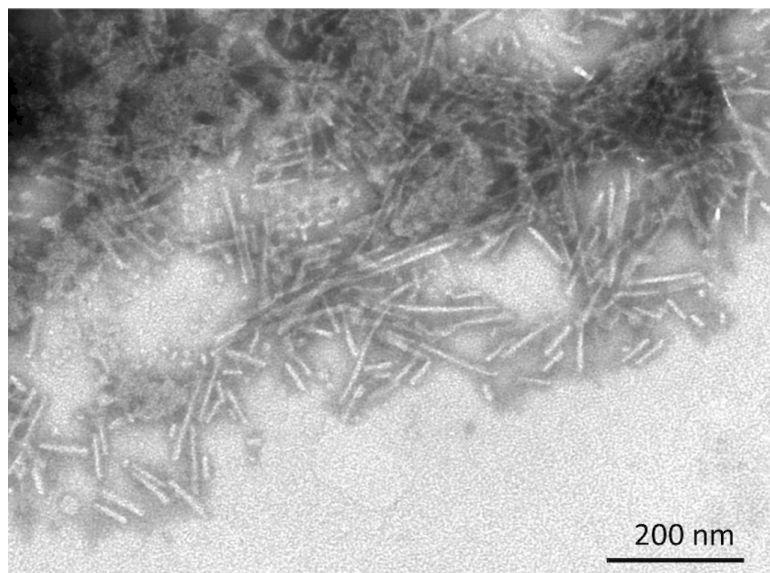
Scientific Background

Alzheimer's Disease (AD) is the most common neurodegenerative disease, affecting 10% of seniors over the age of 65 (1). It was named after Alois Alzheimer, a German scientist who discovered tangled bundles of fibrils where neurons had once been in the brain of a deceased patient in 1907 (2). Beta synuclein is abundant in neurofibrillary lesions of patients with Alzheimer's Disease. Beta synuclein is suggested to be an inhibitor of alpha synuclein aggregation- protecting the central nervous system from the neurotoxin effects of alpha synuclein (3).

References

1. www.alz.org/alzheimers-dementia/facts-figures
2. Alzheimer, A. Über eine eigenartige Erkrankung der Hirnrinde. *Allg. Z. Psychiatr. Psych.-Gerichtl. Med.* 64, 146–148 (1907).
3. Taschenberger G., et al. (2013) *Ann Neurol.* 74(1): 109-118.

Product Images



TEM of Active Human Recombinant Beta Synuclein Protein Preformed Fibrils (Type 1) (SPR-457)

Product Citations (0)

Currently there are no citations for this product.

Reviews

There are no reviews yet.